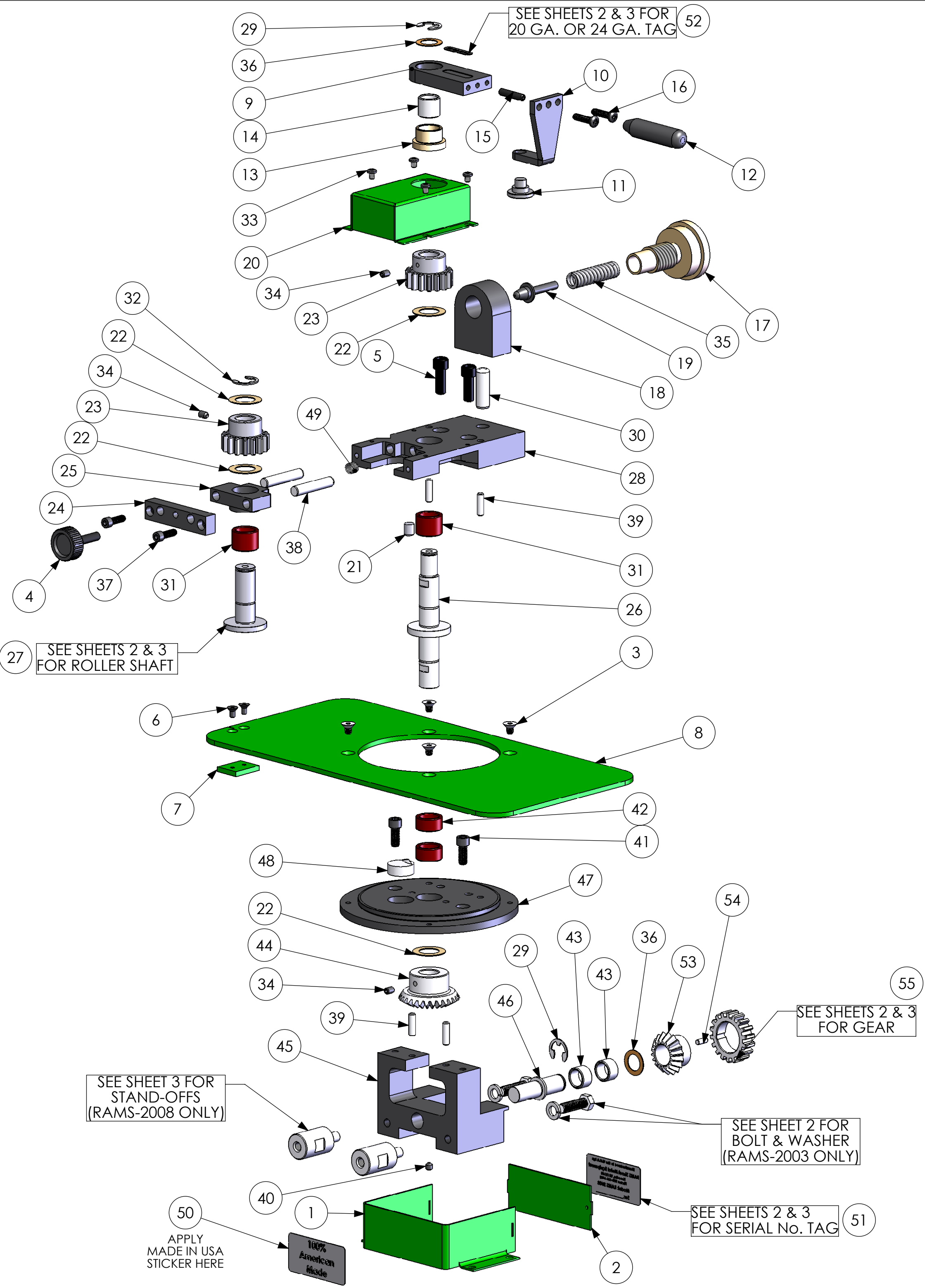


| REVISIONS | | | | |
|-----------|------|--------------|----------|----------|
| ZONE | REV. | DESCRIPTION | DATE | APPROVED |
| - | B | ADDED LABELS | 12/11/08 | SSL |

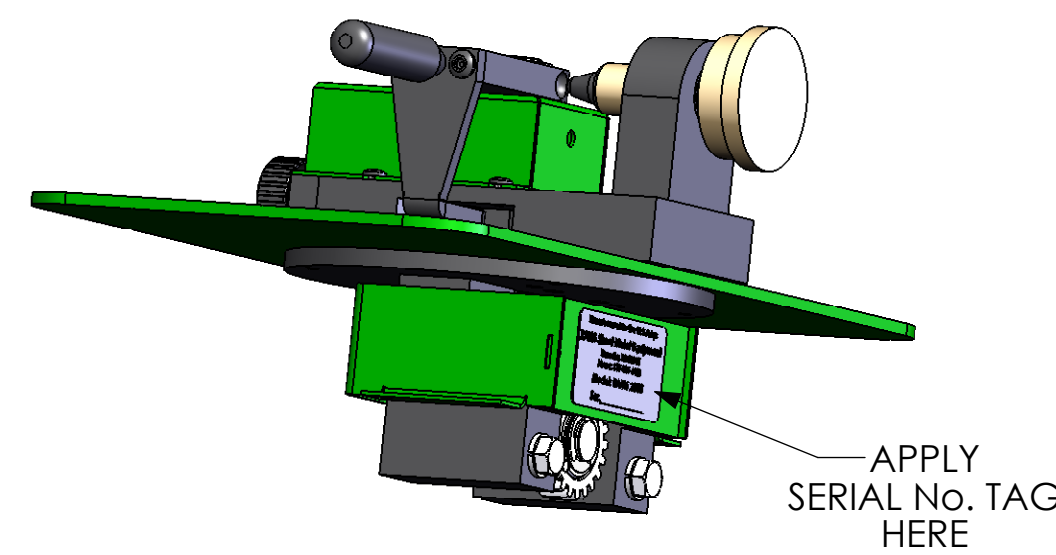
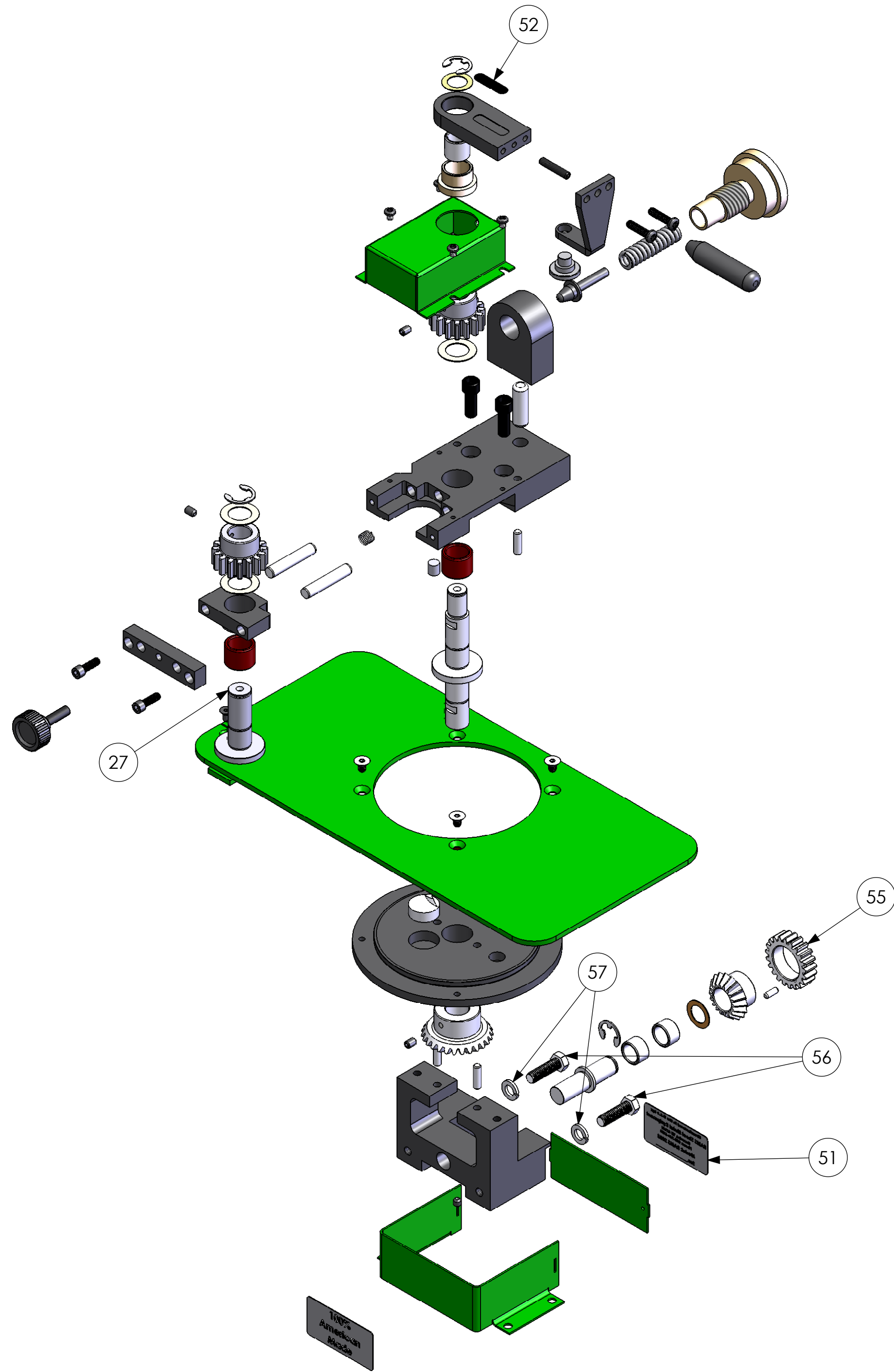
RAMS-2003 & 2008 POWER FLANGER

| BOM Table | | | | |
|-----------|-----------------|---|------|--|
| ITEM NO. | PART NUMBER | DESCRIPTION | QTY. | |
| 1 | PF-1025 | LOWER SHROUD | 1 | |
| 2 | PF-1028 | LOWER SHROUD (BACK) | 1 | |
| 3 | HW-1042 | FHCS, 1/4-20 X 3/8", BLACK | 4 | |
| 4 | KHU-380 | FRONT KNOB | 1 | |
| 5 | HW-1052 | SHCS, 3/8-16 X 1", BLACK | 2 | |
| 6 | PF-1053 | FLAT SOCKET HEAD CAP SCREW: 10-32 X 3/8" LONG | 2 | |
| 7 | PF-1027 | WELD BLOCK | 1 | |
| 8 | PF-1014 | TABLE | 1 | |
| 9 | PF-1016 | AUTOGUIDE (TOP) | 1 | |
| 10 | PF-1023 | AUTO GUIDE (BOTTOM) | 1 | |
| 11 | PF-1017 | AUTOGUIDE (ROLLER) | 1 | |
| 12 | PF-1024 | HANDLE | 1 | |
| 13 | PF-1021 | AUTOGUIDE BUSHING | 1 | |
| 14 | PF-1059 | BEARING: PRT # B-1012 | 1 | |
| 15 | PF-1050 | SET SCREW, 1/4-20 X 1/4", CUP POINT | 1 | |
| 16 | PF-1057 | BHCS, 1/4-20 X 3/4", BLACK | 2 | |
| 17 | PF-1018 | SPRING ADJ. KNOB | 1 | |
| 18 | PF-1019 | TENSION BLOCK | 1 | |
| 19 | PF-1020 | SPRING PLUNGER | 1 | |
| 20 | PF-1022 | GEAR COVER | 1 | |
| 21 | PF-1031 | TOP GUIDE PIN | 1 | |
| 22 | PF-1009 | WASHER (RTNG RING) | 4 | |
| 23 | PF-1010 | SPUR GEAR | 2 | |
| 24 | PF-1011 | END BLOCK | 1 | |
| 25 | PF-1006 | SLIDE BLOCK | 1 | |
| 26 | PF-1007 | SMOOTH ROLLER | 1 | |
| 28 | PF-1005 | PLATE | 1 | |
| 29 | PF-1034 | E-RING FOR A 5/8" DIA SHAFT | 2 | |
| 30 | PF-1041 | DOWEL PIN, 1/2" DIA X 1 1/2" | 1 | |
| 31 | B-1212 | NEEDLE ROLLER BEARING | 2 | |
| 32 | N/A | E-RING FOR A 3/4" DIA SHAFT | 1 | |
| 33 | 91255A533 | BHCS, 10-32 X 1/4", BLACK | 4 | |
| 34 | PF-1047 | SET SCREW, 1/4-20 X 3/8", CUP POINT PATCH LOC | 3 | |
| 35 | N/A | SPRING | 1 | |
| 36 | PF-1052 | TOP WASHER: .030" THK | 2 | |
| 37 | PF-1042 | SHCS, 1/4-20 X 3/4", BLACK | 2 | |
| 38 | PF-1043 | DOWEL PIN, 3/8" DIA X 2" | 2 | |
| 39 | PF-1035 | 1/4" DIA X 7/8" LONG DOWEL PIN | 4 | |
| 40 | PF-1036 | SCREW SH SET 1/4-20 X 1/4" LONG CUP POINT | 1 | |
| 41 | PF-1037 | SCREW SHCS 5/16-18 X 3/4" LONG | 2 | |
| 42 | PF-1039 | BEARING: PRT # B-128 | 2 | |
| 43 | PF-1040 | BEARING: PRT # B-108 | 2 | |
| 44 | PF-1002 | GEAR, MODIFIED | 1 | |
| 45 | PF-1003 | BASE | 1 | |
| 46 | PF-1012 | PINION GEAR SHAFT | 1 | |
| 47 | PF-1013 | ROUND BASE | 1 | |
| 48 | PF-1030 | BOTTOM GUIDE PIN | 1 | |
| 49 | LC-059E-5-M | LEE HANDLE SPRING | 1 | |
| 50 | Made in the USA | LABEL, MADE IN USA | 1 | |
| 53 | PF-1001 | GEAR, PINION, MODIFIED | 1 | |
| 54 | PF-1038 | 3/16" DIA X 1/2" LONG DOWEL PIN | 1 | |



| | | | | |
|---|-------------------------|--------------|---|----------------|
| <p>DIMENSIONS ARE IN INCHES TOLERANCES: FRACTIONAL ± 1/16 ANGULAR: MACH ± BEND ± TWO PLACE DECIMAL ±.01 THREE PLACE DECIMAL ±.005</p> | NAME | DATE | <p>HORIZON SYSTEMS MACHINING 9121 58TH PLACE KENOSHA, WI 53144 PH: 262-605-1122 FAX: 262-605-1198</p> | |
| | DRAWN | JAS 3/2/2006 | | |
| | CHECKED | SSL 12/11/08 | | |
| | ENG APPR. | | | |
| MATERIAL | TITLE: RAMS-2003 & 2008 | | SIZE | DWG. NO. |
| FINISH | SCALE: 1:3 | | C | RAMS-2003_2008 |
| DO NOT SCALE DRAWING | | SCALE: 1:3 | | REV B |
| THE INFORMATION CONTAINED IN THIS DRAWING IS THE SOLE PROPERTY OF HORIZON SYSTEMS MACHINING. ANY REPRODUCTION IN PART OR AS A WHOLE WITHOUT THE WRITTEN PERMISSION OF HORIZON SYSTEMS MACHINING IS PROHIBITED. | | | SHEET 1 OF 3 | |

| REVISIONS | | | | |
|-----------|------|-------------|------|----------|
| ZONE | REV. | DESCRIPTION | DATE | APPROVED |
| - | B | SEE SHEET 1 | - | - |



RAMS-2003 POWER FLANGER

| ITEM NO. | PART NUMBER | DESCRIPTION | QTY. |
|----------|-------------|--------------------------------|------|
| 27 | PF-1008 | KNURLED ROLLER SHAFT | 1 |
| 51 | RAMS 2003 | SERIAL NUMBER TAG | 1 |
| 52 | 24 GA MAX | LABEL, 24 GA MAX | 1 |
| 55 | PF-1026 | MODIFIED IDLER GEAR | 1 |
| 56 | HW-1162 | 3/8-16 X 1 1/4" LONG HEX BOLTS | 2 |
| 57 | HW-1101 | WASHER, SPLIT LOCK, 3/8" | 2 |

| | | | |
|--|--|--|---|
| DIMENSIONS ARE IN INCHES TOLERANCES: FRACTIONAL $\pm 1/16$ ANGULAR: MACH \pm BEND \pm TWO PLACE DECIMAL $\pm .01$ THREE PLACE DECIMAL $\pm .005$ | | NAME: JAS DATE: 3/2/06 CHECKED: SSL DATE: 12/11/08 ENG APPR.: MFG APPR.: Q.A.: | HORIZON SYSTEMS MACHINING 9121 58TH PLACE KENOSHA, WI 53144 PH: 262-605-1122 FAX: 262-605-1198 |
| THE INFORMATION CONTAINED IN THIS DRAWING IS THE SOLE PROPERTY OF HORIZON SYSTEMS MACHINING. ANY REPRODUCTION IN PART OR AS A WHOLE WITHOUT THE WRITTEN PERMISSION OF HORIZON SYSTEMS MACHINING IS PROHIBITED. | | MATERIAL: FINISH: DO NOT SCALE DRAWING | TITLE: RAMS-2003 POWER FLANGER SIZE: C DWG. NO.: RAMS-2003_2008 REV: B SCALE: 1:3 SHEET 2 OF 3 |