



Horizontal Beam Saw  
3600 series



cutoff

[www.originalsaw.com](http://www.originalsaw.com)



Original Saw Company

465 Third Ave SE

Britt, IA 50423 USA

800.733.4063 ph

641.843-3868 ph

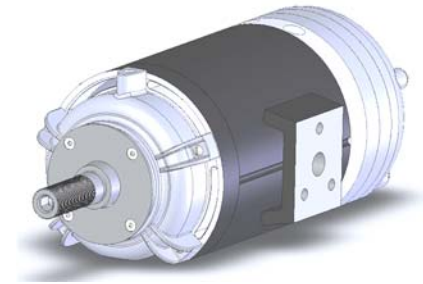
641.843.3869 fx

[www.originalsaw.com](http://www.originalsaw.com)

[customerservice@originalsaw.com](mailto:customerservice@originalsaw.com)

## MOTORS

All Super Duty, Heavy Duty, and Contractor Duty Series motors are manufactured in our Northern Iowa facility. Producing our own motors allows us to uphold a very high level of quality in our machines. These totally enclosed fan cooled (TEFC) motors are manufactured with cooling ducts that move air through the motor laminations to keep them cool while keeping the internal portion of the motor sealed from dust and contamination. These motors also offer the added benefit of an integrated electro-mechanical brake system. These brake systems continue to operate even when the power drops out. Electronic brake systems cannot compete with their durability or reliability.



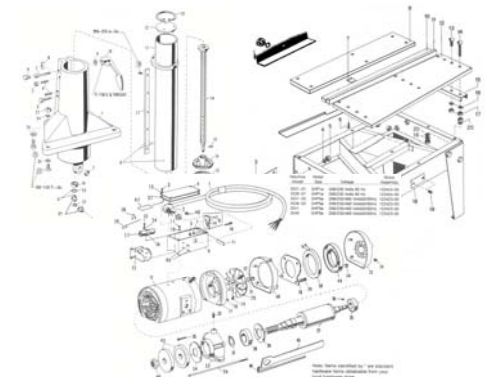
## CAST CONSTRUCTION

Original Saw Company's Radial Arm Saws are manufactured utilizing high quality heavy cast iron and cast aluminum construction. These high quality American castings provide a very rigid, vibration-free cutting platform to perform many different sawing and dado operations. It is because of this construction we can proudly say our machines are the best in the industry. Many of the machines we produce today will be around for generations.



## PARTS AND SERVICE

Original Saw Company strives for customer satisfaction. We stock a full supply of service parts for everything we manufacture and can even supply some parts for older DeWalt units dating back into the 1930's and 1940's. We will work through any issues you may run across during the life of your machine. This is the way Original Saw treats its customers when issues arise whether it is one year after the sale or ten years later; whether it is a machine problem or an application issue. This is why Original Saw Company is the one to rely on now and in the future.



## Contact Information

Company Name: \_\_\_\_\_

Contact Name: \_\_\_\_\_

Contact Phone: \_\_\_\_\_

Contact e-mail \_\_\_\_\_

Please Describe cutting application: \_\_\_\_\_

\_\_\_\_\_

\_\_\_\_\_

Please sketch cutting application if needed. Then fax to 641-843-3869 or scan and e-mail to [customerservice@originalsaw.com](mailto:customerservice@originalsaw.com).



cutoff



## Horizontal Beam Saw 3600 Series type 2

Original Model 3691-01-05  
shown with optional:  
Electronic Power Carriage Feed System  
Aluminum t-slot table



WE'VE WORKED WITH A WIDE RANGE OF APPLICATIONS. HOW CAN WE HELP YOU?

Simplifying one application at a time.

PROVEN

.....

DEPENDABLE

.....

RELIABLE

Our Horizontal Beam Saw Series is constructed of cast iron, cast aluminum, machined structural box tubing and heavy welded 'U' channel frame. It is capable of cutoff lengths of up to 65" and up to 8" deep. The hardened, ground, smooth replaceable track rails and our time tested motors will produce many years of trouble free service. Our machines are capable of a variety of cut off, dado, and bevel cutting operations and perform like no other machine in its range. It is manufactured with pride in our Northern Iowa facility.

Standard equipment for metal cutting includes: complete machine, legs, frame, motor w/ automatic electromechanical brake, magnetic starter w/ low voltage controls, aluminum extruded t-slot rail table top, aluminum angle fence, manual chain carriage feed, complete upper and lower blade guarding and blade wrench kit.

MODEL:	3690-01-01	3690-01-03	3690-01-05	3691-01-01	3691-01-03	3691-01-05
Blade Size	14" / 350mm	14" / 350mm	16" / 400mm	16" / 400mm	16" / 400mm	20" / 400mm
<b>MOTOR:</b>						
HP	3	5	5	5	7.5	7.5
Phase	1	3	3	1	3	3
Hertz	60	50/60	50/60	60	50/60	50/60
	3450	3450/2825	3450/2825	3450	3450/2825	3450/2825
Volts *	230	208/230/460	208/230/460	208/230/460	208/230/460	208/230/460
Watts	2238	3730	3730	3730	5592	5592
Brake	automatic	automatic	automatic	automatic	automatic	automatic
Arbor diameter	1" / 25.4mm	1" / 25.4mm	1" / 25.4mm	1" / 25.4mm	1" / 25.4mm	1" / 25.4mm
Arbor length	2 3/16 / 55mm	2 3/16 / 55mm	2 3/16 / 55mm	3 1/8 / 79mm	3 1/8 / 79mm	1 3/8 / 35mm
<b>CAPACITIES: inches / metric</b>						
Max Cross Cut 1" Stock	66" / 1651mm	66" / 1651mm	66" / 1651mm	65" / 1651mm	65" / 1651mm	62" / 1574mm
Max cross Cut 4" Stock	63" / 1600mm	63" / 1600mm	63" / 1600mm	63" / 1600mm	63" / 1600mm	62" / 1574mm
Max Cross Cut 6" Stock	N / A	N / A	N / A	N / A	N / A	62" / 1574mm
Max Cross Cut 8" stock	N / A	N / A	N / A	N / A	N / A	N/A
Max Depth of Cut	4 1/8" / 104mm	4 1/8" / 104mm	4 15/16 / 125mm	4 3/8 / 111mm	6 1/4 / 158mm	7" / 177mm
Max Depth of Cut 45° Bevel	1 3/4 / 44mm	1 3/4 / 44mm	2" / 50mm	2" / 50mm	3 1/4 / 82mm	3 1/2 / 88mm



Photo above shows the stand mounted control panel and electric enclosure for option-



View above shows standard start/stop station on manual



View above shows beam,, replaceable tracks, drive

\*\* Available in the following 3 phase voltages 220/230/380/460/575/600 (50/60)

\*\*\* 22" crosscut dimensions are set for a 8" depth of cut using 22" diameter blade

 simplifying

cutoff



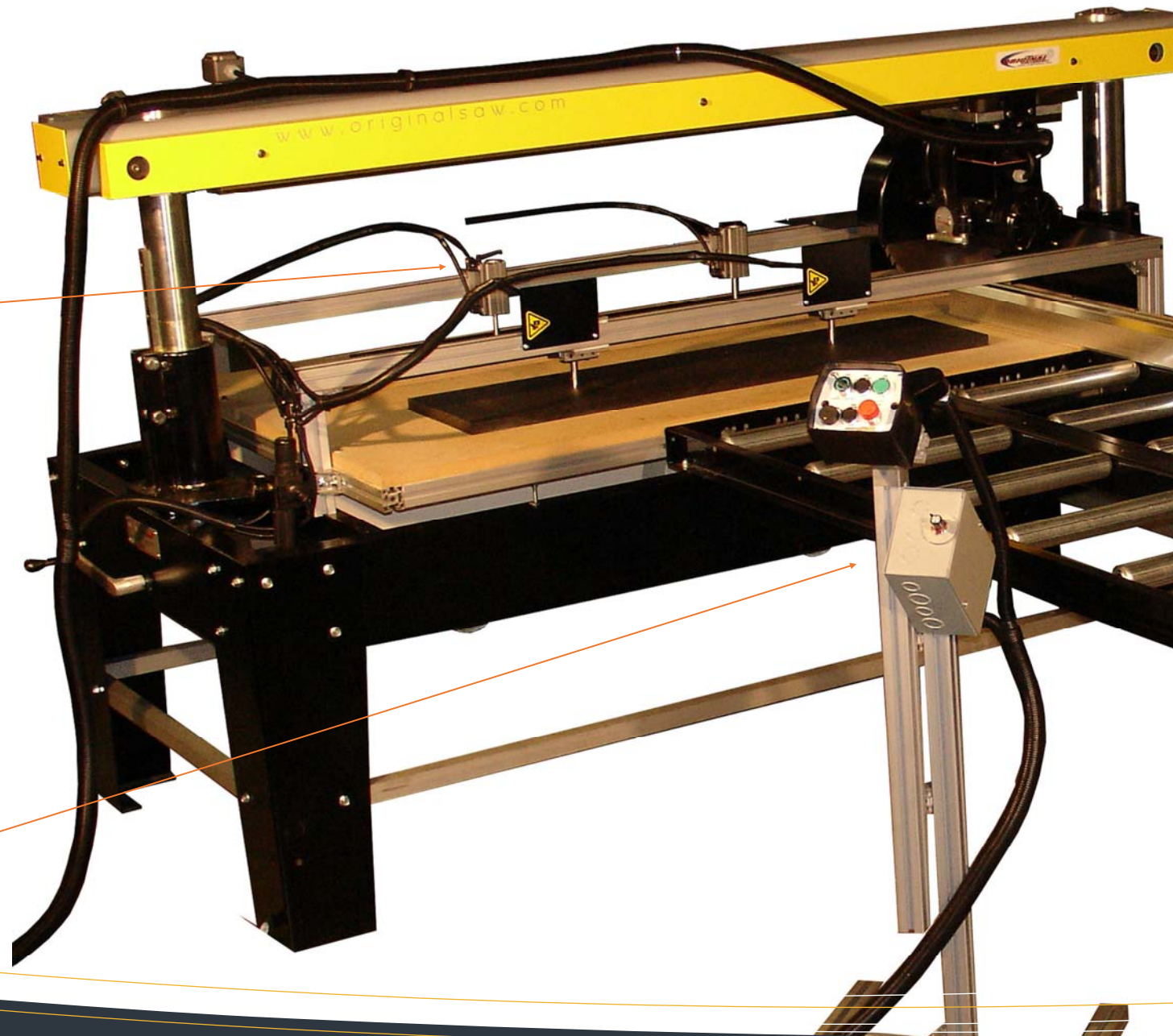


## Accessories

Pneumatic clamps –vertical clamps pressing down on material.



Powered Carriage System control panel and pneumatic clamping controls



Model 3690-01-05  
Accessories:

Table extensions  
Measuring systems  
Clamping system with  
Loading

OS Series material handling extension tables  
and measuring system



Dust collection System  
(mounted under table )

## Accessories



### Powered carriage system

This accessory converts the standard beam saw into a semi automatic cut off machine. The system consists of:  
**Stand mounted control panel:** this panel contains the arbor motor start/stop station, e-stop, forward and reverse buttons and the variable speed adjustments, as well as a system carriage on/off.

**Adjustable cam stops:** these adjustable stops will allow the length of cut or carriage travel to be adjusted. This stop limits the carriage travel but actuation the limit switch on the carriage to automatically sent the carriage back to the home or rest position behind the fence.

**Electronics Enclosure:** This enclosure houses the DC drive unit and the motor controls.

### OS Series extension tables, measuring systems



The OS Series of extension tables and measuring systems will attach up to all metal cutting series radial arm saws and beam saws, they include roller extension tables, flat extension tables, manual measuring systems. Please see additional flyer or website for additional details. [www.originalsaw.com/accessories](http://www.originalsaw.com/accessories)





## Dust Collection Shrouds

This accessory adds in frame dust collection shrouds, and slotted table. This allows dust to be pulled down through the slot in the table and through the frame away from operators.



## Pneumatic Clamping System

This accessory adds pneumatic clamps to the standard beam saw. The system consists of:  
**Moveable Cylinders:** the adjustable vertical clamps will clamp the material being cut to the table top securely holding the material while it is cut.

## Saw Blades – woodcutting

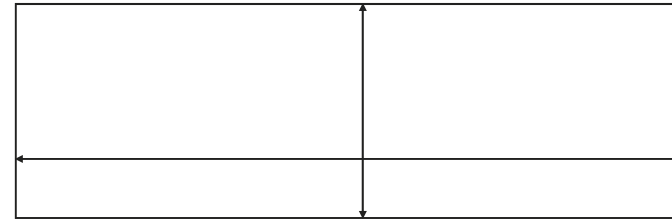
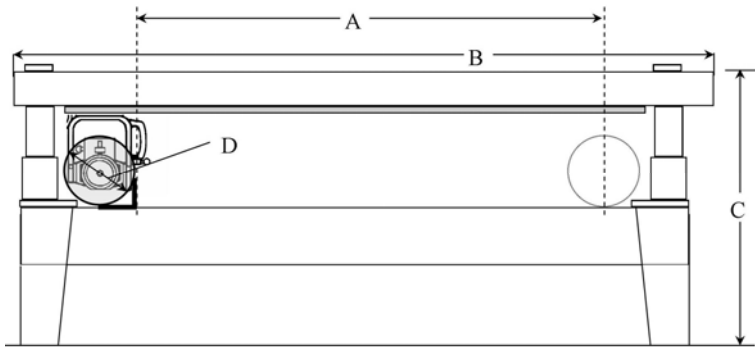
T2009	14" x 40 tooth carbide blade
T2009-02	14" x 60 tooth carbide blade
T2010	16" x 40 tooth carbide blade
T2010-01	16" x 60 tooth carbide blade
T2010-02	16" x 80 tooth carbide blade

T2011	20" x 60 tooth carbide blade
T2011-01	20" x 80 tooth carbide blade
T2014	22" x 80 tooth carbide blade

other blades available see website for details



cutoff



Index #	A	B	C	D
Model#	<b>Crosscut</b>			<b>Blade</b>
3690-01-01	85"	105"	59"	14"
3690-01-03	85"	105"	59"	14"
3690-01-05	84"	105"	80"	16"
3691-01-01	84"	105"	80"	16"
3691-01-03	84"	105"	80"	16"
3691-01-05	62"	105"	62"	20"
3691-01-07	61"	105"	63"	22"

Index	Dimensions
	<b>Beam Saw Series</b>
<b>A</b>	46"
<b>B</b>	100"



WE'VE WORKED WITH A WIDE RANGE OF APPLICATIONS. HOW CAN WE HELP YOU?

Simplifying one application at a time.

PROVEN

.....

DEPENDABLE

.....

RELIABLE

Original Saw Company

465 Third Ave SE

Britt, IA 50423 USA

800.733.4063 641.843.3868 ph

641.843.3869 fax

www.originalsaw.com

customerservice@originalsaw.com

## Beam Saw Series type 2

### Benefits:

- Cut off 64" wide material in one pass. —————→
- Smooth, precise, vibration free cutting through entire length of cut. —————→
- Stable platform for heavy cutting. —————→
- Extra power to cut multiple pieces at a time up to 8" deep on 22" / 550mm machines. —————→
- Automatic blade brake for safety and peace of mind. —————→
- Anti-restart feature (OSHA Required) and low voltage start/stop station (24 volt) . —————→
- Automatic adjusting lower guard (OSHA required). —————→
- Pushbutton operation with optional equipment. —————→

### Features:

- Long structural box tubing beam.
- Precision machined dual columns, supported by heavy cast iron base castings, provide precise movements in the carriage and beam.
- Heavy 'U' channel welded and powder coated frame provides a stable cutting platform.
- 3, 5 and 7.5 horse power arbor motors with die cast rotors and precision machined arbors that are Totally Enclosed Fan Cooled (TEFC).
- Automatic electro-mechanical brake system built into the motor.
- Magnetic starter will drop out when power is disrupted and machine will not restart until start button is pressed.
- Blade guard automatically adjusts over different thickness material.
- Optional electronic power cross feed allows pushbutton operation of carriage to initiate cycle.



WE'VE WORKED WITH A WIDE RANGE OF APPLICATIONS. HOW CAN WE HELP YOU?

Simplifying one application at a time.

PROVEN

.....

DEPENDABLE

.....

RELIABLE



cutoff

# Simple and safe cutting solutions that work for your business.

SIMPLIFYING .....

.....Cutoff



## Original Saw<sup>™</sup> Family of Products

- Metal Cutting Series
- Super Duty Series Radial Arm Saws
- Heavy Duty Series Radial Arm Saws
- Contractor Duty Series Radial Arm Saws
- S - Series Manual Measuring Systems
- S - Series Material Handling Tables
- Electric Arbor Motors
- Power Drive Carriage Systems
- Pneumatic Clamping Systems



Original Saw Company

465 Third Ave SE

Britt, IA 50423 USA

800.733.4063 ph

641.843.3868 ph

641.843.3869 fax

[www.originalsaw.com](http://www.originalsaw.com)

[customerservice@originalsaw.com](mailto:customerservice@originalsaw.com)

[www.originalsaw.com](http://www.originalsaw.com)