

PARTS BREAKDOWN FOR MODELS: EL1, EL1A, EL2, EL3
RICE HYDRO INC.

****EL1 serial numbers #55263 & previous****

| PART NUMBER.. | DESCRIPTION.. | QTY REQ'D |
|---------------|----------------------------|--------------|
| UD04-0006.09 | BEARING | 1 |
| UD04-0007.18 | SEAL | 3 |
| UD04-0007.24 | SEAL | 1 |
| UD04-0009.09 | RETAINER CLIP | 1 |
| UD04-0014.20 | PLUNGER ROD | 3 |
| UD04-0023.22 | SUPPORT RING | 1 |
| UD04-0031.42 | CRANKSHAFT - EL2/EL3 | 1 |
| UD04-0031.45 | CRANKSHAFT - EL1/EL1A | 1 |
| UD04-0103.41 | ALUMINUM CONNECTING ROD | 3 |
| UD04-0208.70 | BACK COVER | 1 |
| UD04-0208.72 | CRANKCASE COVER | 1 |
| UD04-0209.56 | CRANKCASE | 1 |
| UD04-0214.21 | BEARING | 1 |
| UD04-0301.42 | SLINGER RING | 1 |
| UD04-0303.18 | PLUNGER NUT | 1 |
| UD04-0517.08 | ELECTRIC FLANGE | 1 |
| UD04-0602.76 | GASKET - CRANKCASE COVER | 1 |
| UD02-0605.09 | ALUMINUM WASHER | 1 |
| UD04-0605.33 | PLUNGER WASHER | 1 |
| UD04-0605.49 | O-RING | 1 |
| UD04-1101.A2 | O-RING | 6 |
| UD04-1101.A3 | VALVE O-RING | 6 |
| UD04-1101.A4 | O-RING | 1 |
| UD04-1101.A6 | O-RING | 1 |
| UD04-1101.A7 | O-RING - EL2/EL3 | 3 |
| UD04-1101.D7 | O-RING - EL1/EL1A | 3 |
| UD04-1205.35 | PLUNGER - 15 MM | 3 |
| UD04-1212.10 | SIDE PLATE | 1 |
| UD04-1411.01 | WASHER | 12 |
| UD04-1502.15 | CONNECTING ROD PIN | 3 |
| UD04-1506.26 | SNAP RING | 1 |
| UD04-1603.64 | 3/8" PLUG | 1 |
| UD02-1603.67 | DRAIN PLUG | 1 |
| UD04-1603.69 | SIGHT GLASS | 1 |
| UD04-1603.72 | VALVE CAP | 6 |
| UD04-1604.C7 | ALUMINUM MANIFOLD EL1/EL1A | 1 |
| UD04-1604.59 | BRASS MANIFOLD EL2/EL3 | 1 |
| UD04-1805.19 | BOLT | 4 |
| UD04-1805.20 | BOLT | 8 |
| UD04-1805.39 | BOLT | 8 |
| UD04-6058.26 | OIL VENT CAP | 1 |

OUTLET HOSES:

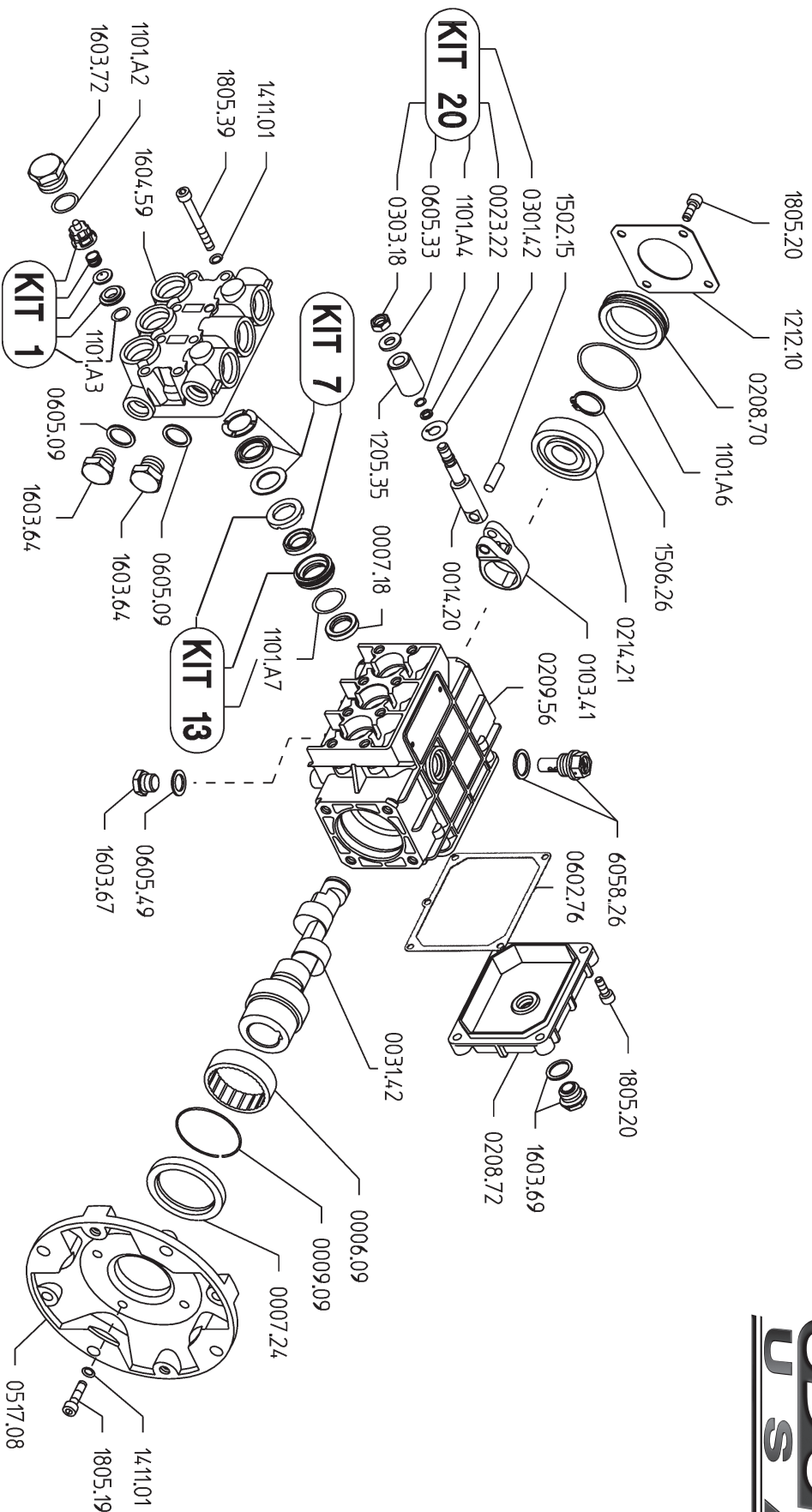
| | | |
|-----------------------------|--------------------------------|---|
| HOSE-1/2X8-RH (EL1/1A) | 8' FOOT OUTLET HOSE - STANDARD | 1 |
| COUPLERBODY-1/2 (EL1/1A) | FEMALE PUMP OUTLET - HOSE | 1 |
| COUPLERPLUG-1/2 (EL1/1A) | MALE PUMP OUTLET - PIPING | 1 |
| FITTING-1/2-MPIPE (EL1/1A) | FITTING FOR HOSE - RIGID | 1 |
| FITTING-1/2-MPX (EL1/1A) | FITTING FOR HOSE - SWIVEL | 1 |
| HOSE-1/2-2500XFT (EL1/1A) | SPECIFY LENGTH OF HOSE | |
| HOSE-3/8X8-RH (EL2/3) | 8' FOOT OUTLET HOSE - STANDARD | 1 |
| COUPLERBODY-BR-3/8F (EL2/3) | FEMALE PUMP OUTLET - HOSE | 1 |
| COUPLERPLUG-3/8M (EL2/3) | MALE PUMP OUTLET - PIPING | 1 |
| FITTING-3/8-MPIPE (EL2/3) | FITTING FOR HOSE - RIGID | 1 |
| FITTING-3/8-MPX (EL2/3) | FITTING FOR HOSE - SWIVEL | 1 |
| HOSE-3/8-3000XFT (EL2/3) | SPECIFY LENGTH OF HOSE | |

RICE HYDRO INC.

****EL1 serial numbers #55263 & previous****

| PART NUMBER.. | DESCRIPTION.. | QTY REQ'D |
|--|---|--------------|
| MOTORS & PUMPS: | | |
| MOTOR-1/2HP-EL1 - L (EL1) | 1/2HP 110/220V 1 PHASE 60HZ | 1 |
| MOTOR-1HP-CFACE (EL1A/2) | 1HP 110/220V 1 PHASE 50/60HZ | 1 |
| MOTOR-1.5HP-50/60HZ (EL3) | 1.5HP 110/220V 1 PHASE 50/60HZ | 1 |
| SPEC-PND-3.0/15-ZA (EL1/1A) | TRIPLEX PLUNGER PUMP | 1 |
| SPEC-PNL3.0/20-Z (EL2/3) | TRIPLEX PLUNGER PUMP | 1 |
| MISCELLANEOUS PARTS: | | |
| HOESWIVEL-1/2 | HOSE SWIVEL INLET | 1 |
| HOESCREEN&WASHER | INLET HOSE SCREEN | 1 |
| BALLVALVE-1/2 (EL1/1A) | OUTLET BALLVALVE | 1 |
| BALLVALVE-3/8HP (EL2/3) | OUTLET BALLVALVE | 1 |
| VALVE-RELIEF-500PSI (EL1/1A) BLUE SPRING 50-500 PSI | PRESSURE REGULATOR | 1 |
| VALVE-RELIEF-900PSI (EL2) RED SPRING 100-900 PSI | PRESSURE REGULATOR | 1 |
| VALVE-RELIEF-2000PSI (EL3) YELLOW SPRING 200-2000 PSI | PRESSURE REGULATOR | 1 |
| GAUGE-600 (EL1/1A) | 0-600 PSI LIQUID GAUGE | 1 |
| GAUGE-1500 (EL2) | 0-1500 PSI LIQUID GAUGE | 1 |
| GAUGE-2000 (EL3) | 0-2000 PSI LIQUID GAUGE | 1 |
| NEEDLEVALVE-1/4 | AIR BLEED VALVE | 1 |
| KING-EL1A | SHIPPING BOX | 1 |
| LABEL-KIT-EL | INSTRUCTION AND CAUTION STICKERS | 1 |
| KITS: | | |
| | *Kits are all inclusive for PND/PNL pumps | |
| UD04-KIT-UD1 | VALVE KIT | |
| UD04-KIT-UD7 | SEAL KIT | |
| UD04-KIT-UD13 | BRASS KIT 15MM | |
| UD04-KIT-UD20 | PLUNGER O-RING KIT 15MM | |

PNL 3.0/20-Z



PNL 3.0/20-Z Quick Reference

| | | | |
|------------------------|--------------------------------|------------------------|--------------|
| Maximum Flow | 3.0 GPM | Valve Kit | 04-KIT UD-1 |
| Maximum Pressure | 2000 PSI | Seal Kit | 04-KIT UD-7 |
| Rated Pump Speed | 3400 RPM | Brass Kit | 04-KIT UD-13 |
| Oil Capacity | 12 oz. UDOR LUBE or SAE 30W | Plunger Bolt Kit | 04-KIT UD-20 |
| | | Plunger Part # | 04-1205.35 |
| | | Plunger Diameter | 15 MM |