

PARTS BREAKDOWN FOR MODEL DPH-56/250
RICE HYDRO, INC.

PART NUMBER..	DESCRIPTION..	QTY REQ'D
UD02-0001.08	RETAINER RING	2
UD02-0007.02	SEAL	2
SPEC-00238	DIAPHRAGM BOLT (02-0102.03)	6
UD02-0202.79	SUCTION ELBOW	1
UD02-0206.36	PISTON SLEEVE	6
UD02-0208.22	ONLY AVAILIABLE IN SPEC-01740	1
UD02-0209.B5	PUMP BODY	1
UD02-0214.04	BALL BEARING	2
UD02-0216.07	BEARING	1
SPEC-00801	RETAINER WASHER (02-0301.07)	6
UD02-0301.28	CRANKSHAFT WASHER	2
UD02-0302.59	ROD SPACER	2
UD02-0501.67	BEARING FLANGE	1
UD02-0604.39	NUT	1
UD02-0605.49	GASKET	1
SPEC-01291	DIAPHRAGM BUNA (02-0903.02)	6
SPEC-01365	O-RING (02-1101.01)	12
UD02-1101.G5	O-RING	24
SPEC-01368	O-RING (02-1101.04)	2
UD02-1101.68	O-RING	1
SPEC-01386	ONLY AVAILIABLE IN SPEC-01740	1
UD02-1101.51	O-RING	2
SPEC-01401	O-RING (02-1101.58)	1
UD02-1202.98	MOUNTING RAIL	2
UD02-1203.30	ONLY AVAILIABLE IN SPEC-01740	1
UD02-1605.38	MANIFOLD TUBE W/ 3/4" F	4
UD02-1205.08	PISTON	6
SPEC-01709	VALVE ASSEMBLY (02-6006.08)	12
UD02-6033.02	OIL RESERVOIR ASSY	1
UD02-6015.59	PISTON & ROD ASSY	6
UD02-1403.07	WASHER	2
UD02-1403.09	WASHER	30
SPEC-01845	WASHER (02-1403.10)	36
UD02-1403.12	WASHER	1
UD02-1502.02	CONNECTING ROD PIN	6
UD02-1506.02	SNAP RING	12
UD02-1509.05	PISTON RING	4
UD02-1506.16	SNAP RING	2
UD02-1519.33	CONNECTING ROD	6
UD02-1601.34	MANIFOLD TUBE	6
UD02-1601.33	INLET TUBE	1
UD02-1603.87	PLUG	2
UD02-1603.36	PLUG	2
UD02-1603.67	PLUG	1
UD02-1604.E3	HEAD	6
UD02-1605.37	DISCHARGE TUBE	1
UD02-1804.03	BOLT	6
UD02-1804.06	BOLT	3
UD02-1804.77	BOLT	1
SPEC-02486	BOLT (02-1804.79)	36
UD02-1804.25	BOLT	24
UD02-1805.04	BOLT	2
UD02-1805.06	ONLY AVAILIABLE IN SPEC-01740	3

PARTS BREAKDOWN FOR MODEL DPH-56/250
RICE HYDRO, INC.

PART NUMBER..	DESCRIPTION..	QTY REQ'D
UD02-1805.71	BOLT	2
UD02-0002.87	CRANKSHAFT	1
SPEC-05949	BOLT (02-1804.72)	12
UD02-0501.H9	OIL RESERVOIR ADAPTER	1
UD02-1101.93	O-RING	2
UD02-1101.56	O-RING	1
UD02-1403.36	WASHER	3
UD02-1219.02	PTO SAFETY SHIELD (<i>PICTURE NOT ACCURATE</i>)	1
UD02-1219.15	SHAFT PROTECTOR	1
UD02-1412.03	WASHER	2

MISCELLANEOUS PARTS:

HONDA-GX390UT2-HA2	13 HP, 390 CC HONDA ENGINE	1
PUMP-DIA-56/250	56 GPM AT 250 PSI DIAPHRAGM PUMP	1
GAUGE-600	0-600 PSI LIQUID GAUGE	1
BALLVALVE-1&1/4	1&1/4" BALLVALVE	1
CHECKVALVE-1&1/4	1&1/4" SPRING CHECKVALVE	1
VALVE-RELIEF-300PSI	300 PSI PRESSURE REGULATOR	1
CARTON-TR6	EXTRA LARGE SHIPPING BOX	1
LABEL-KIT-DP	INSTRUCTION AND CAUTION STICKERS	1

PUMP OUTLET CONNECTIONS TO PIPING:

EL-G-1&1/2X90	1&1/2" X 90 GALV. ELBOW	1
HOSEBARB-S-1&1/2	1&1/2" BARB X MNPT	1

OUTLET HOSE:

HOSE-1&1/4-OUTLET	1&1/4" OUTLET HOSE - 8 FOOT	1
-------------------	-----------------------------	---

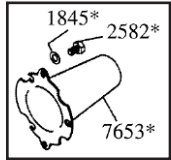
KITS:

SPEC-8700.29	DIAPHRAGM REPAIR KIT (BUNA)	
	SPEC-01365, O-RING	QTY 12
	SPEC-01291, DIAPHRAGM	QTY 6
SPEC-8700.44	DIAPHRAGM REPAIR KIT (DESMOPAN)	
	SPEC-01365, O-RING	QTY 12
	SPEC-08113, DIAPHRAGM	QTY 6

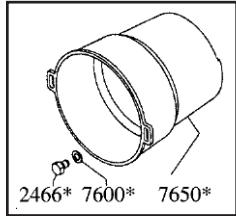
PRICES SUBJECT TO CHANGE WITHOUT NOTICE

ZETA-230/CC - Exploded View Diagram & Parts List

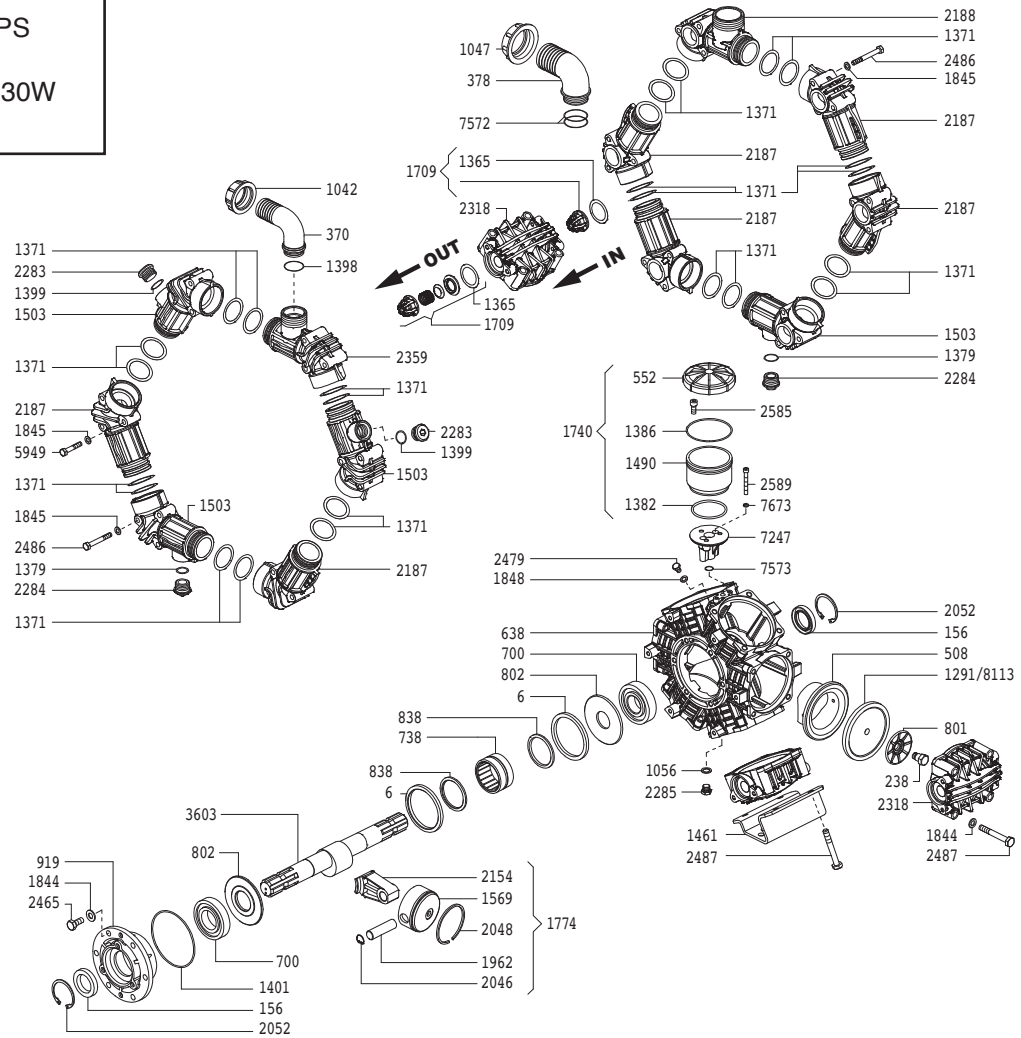
ZETA-230/CC PUMPS
Require 90oz.
UDOR LUBE, or SAE 30W
Non-detergent Oil



*Optional Thru-Shaft Protector



*Optional PTO Safety Shield



REF#	PART#	DESCRIPTION	QTY	REF#	PART#	DESCRIPTION	QTY
6	0001.08	Retainer Ring	2	1844	1403.09	Washer	30
156	0007.02	Seal	2	1845	1403.10	Washer	36
238	0102.03	Diaphragm Bolt	6	1848	1403.12	Washer	1
370	0202.78	1-1/2" Hose Barb Elbow	1	1962	1502.02	Connecting Rod Pin	6
378	0202.79	Suction Elbow 2"	1	2046	1506.02	Snap Ring	12
508	0206.36	Piston Sleeve	6	2048	1509.05	Piston Ring	4
552	0208.22	Oil Reservoir Cap	1	2052	1506.16	Snap Ring	2
638	0209.B5	Pump Body	1	2154	1519.33	Connecting Rod	6
700	0214.04	Ball Bearing	2	2187	1601.34	Manifold Tube	6
738	0216.07	Bearing	1	2188	1601.33	Inlet Tube	1
801	0301.07	Retainer Washer	6	2283	1603.87	Plug	2
802	0301.28	Crankshaft Washer	2	2284	1603.36	Plug	2
838	0302.59	Rod Spacer	2	2285	1603.67	Plug	1
919	0501.67	Bearing Flange	1	2318	1604.E3	Head	6
1042	0604.50	Barb Nut	1	2359	1605.37	Discharge Tube	1
1047	0604.39	Nut	1	2465	1804.03	Bolt	6
1056	0605.49	Gasket	1	*2466	1804.06	Bolt	3
1291	0903.02	Piston Diaphragm, BUNA-N Optional	6	2479	1804.77	Bolt	1
**1365	1101.01	O-Ring	12	2486	1804.79	Bolt	36
1371	1101.G5	O-Ring	24	2487	1804.25	Bolt	24
1379	1101.04	O-Ring	2	*2582	1805.04	Bolt	2
1382	1101.68	O-Ring	1	2585	1805.06	Bolt	3
1386	1101.32	O-Ring	1	2589	1805.71	Bolt	2
1398	1101.42	O-Ring	1	3603	0002.87	Crankshaft	1
1399	1101.51	O-Ring	2	5949	1804.72	Bolt	12
1401	1101.58	O-Ring	1	7247	0501.H9	Oil Reservoir Adapter	1
1461	1202.98	Mounting Rail	2	7572	1101.93	O-Ring	2
1490	1203.30	Oil Sight Glass	1	7573	1101.56	O-Ring	1
1503	1605.38	Manifold Tube with 3/4" FNPT Port	4	*7600	1403.36	Washer	3
1569	1205.08	Piston	6	*7650	1219.02	PTO Safety Shield Optional	1
1709	6006.08	Valve Assembly	12	*7653	1219.15	Shaft Protector Thru Shaft Optional	1
1740	6033.02	Oil Reservoir Assembly	1	7673	1412.03	Washer	2
1774	6015.59	Piston & Rod Assembly	6	**8113	0903.34	Piston Diaphragm, DESMOPAN Standard	6
1843	1403.07	Washer	2				

** Parts Included in Diaphragm Repair Kit - #8700.44 (Also available in BUNA-N - #8700.29)