



VERTICAL BAND SAWS

**INSTRUCTION MANUAL AND PARTS LIST
MODEL 14-10**

DAKE/PARMA



WHEN ORDERING PARTS

GIVE COMPLETE SERIAL NUMBER OF MACHINE
GIVE PART NUMBER AND NAME
GIVE AMOUNT REQUIRED

Unless the above data is included we cannot fill your order.

MODEL: _____

SERIAL NUMBER: _____

DATE PURCHASED: _____

DAKE Division of JSJ
724 Robbins Road
Grand Haven, MI 49417

Phone: 616-842-7110 800-937-3253
Fax: 616-842-0859 800-846-3253
E-mail: technicalservice@dakecorp.com
Website: www.dakecorp.com

Table of Contents

| | |
|-----------------------|------------|
| Specifications | Page 3 |
| Features | Page 3 |
| Adjustments | Page 4 |
| Lubricating | Page 4 |
| Blade Selection | Page 5 |
| Parts List | Pages 6-13 |

Specifications

| | |
|------------------------------|---------------------|
| Part Number | 988050 / 988051 |
| Blade Width | 1/4-1/2 inches |
| Blade Length | 120 inches |
| Blade Speed | 70/140/270/540 |
| Band Wheels | 2 |
| Band Wheel Size | 14 inches |
| Horsepower | 1 h.p. |
| Throat Size (band to column) | 14 inches |
| Maximum work height | 10 inches |
| Worktable Dimensions | 15 x 16 inches |
| Worktable Tilt | 5° left / 45° right |
| Worktable Height | 42 1/2 inches |
| Machine Height | 76 inches |
| Machine Floor Space | 24 x 28 inches |
| Weight | 500 pounds |

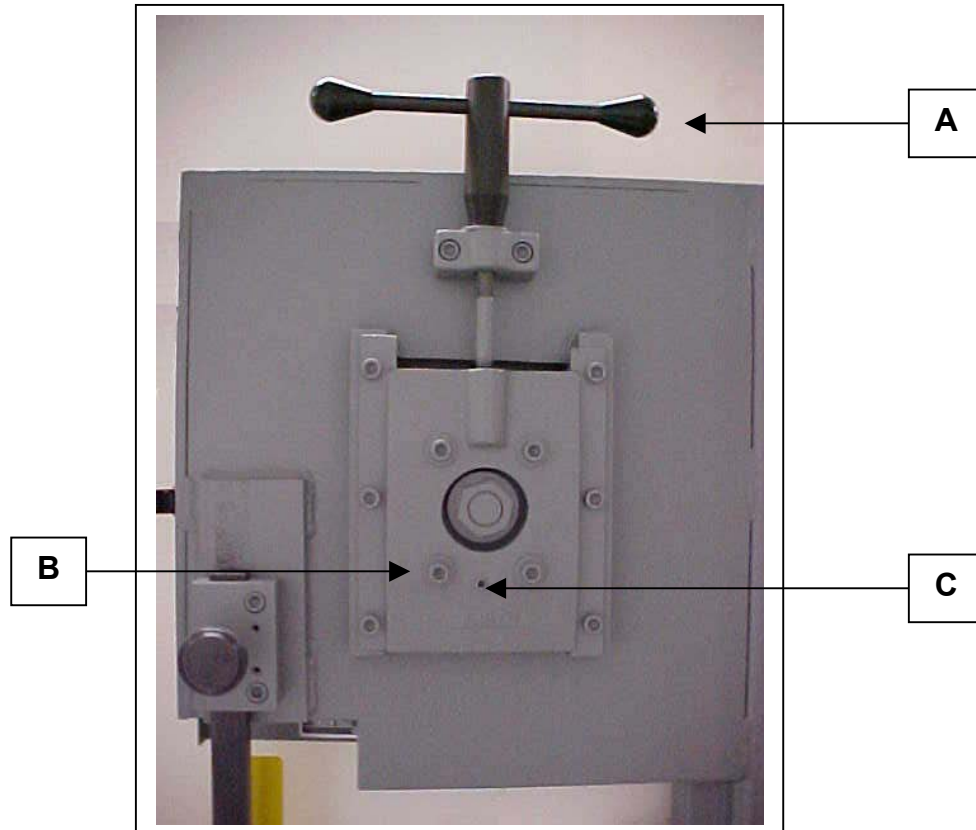
Features

- Designed for high performance at a low price
- Blade changes are quick and easy.
- 4 speeds that are easily adjustable.

Adjustments

Blade Tension Handle (Item A) – Used to remove and install saw blade. Also used to set the correct blade tension – Be sure blade is tight.

Upper Blade Wheel Cant Adjustment (Items B&C) – If your saw should get out of adjustment and the blade runs off the wheel or runs back against the lip, loosen the two bottom bolts on the wheel slide. Turn the set screw in or out to make the blade run approximately 1/32" away from the lip on the back of the wheel. Tighten the two wheel slide bolts. IMPORTANT: If the blade is allowed to run against the lip on the wheel it will wear the lip off.



Lubricating

Gear Box: Your 14-10 gearbox is filled at the factory. Check the fluid level on arrival, and then check every six months thereafter. Use 90 weight gear lube to maintain fluid level at the fill / check pipe plug.

Blade Selection

For Operator convenience, a blade selector chart is located inside the saw cover. It provides recommended blade speeds, required teeth per inch, and minimum cutting radius for various blade widths. The following chart can be used to select the blade needed:

Standard Tooth Applications

| Thickness of Material | Teeth per Inch |
|-----------------------|----------------|
| Up to 1/8" | 18 Teeth |
| 1/8" to 1/4" | 14 Teeth |
| 1/4" to 1/2" | 10 Teeth |
| 1/2" to 1" | 8 Teeth |
| 1" to 3" | 6 –4 Teeth |
| 3" to 6" | 4-6 Teeth |
| 6" and longer | 3H |

Note: 1) You must have at least 3 teeth into your work or blade damage will result.
2) For straight cuts, a 3/4" inch blade is best.

Blade Speed (feet per minute)

To change blade speeds, lift the motor and move the v-belt to one of the three speeds offered: 70/140/270/540. Refer to the blade selector chart inside the cover on your 14-10 for the appropriate speed.

Blade Removal and Installation

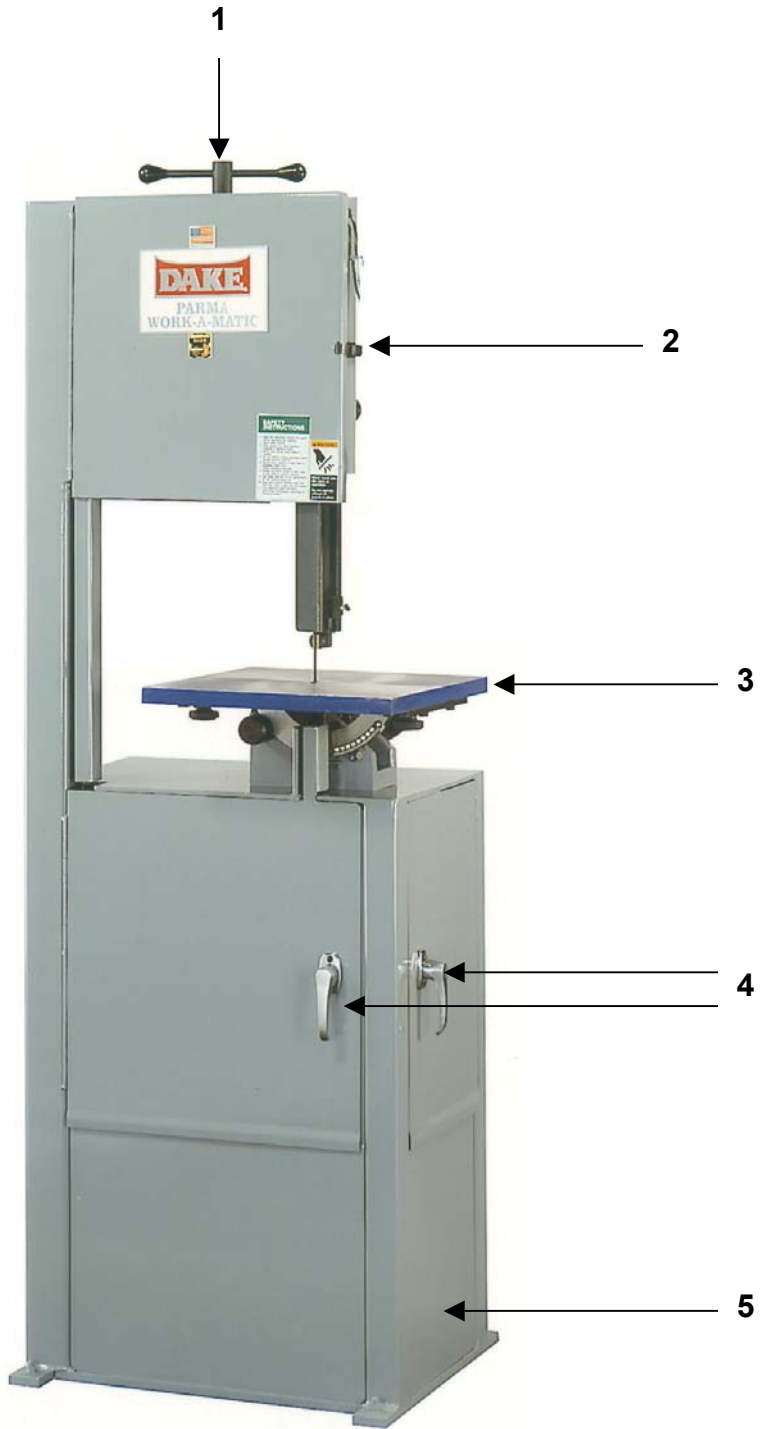
To remove the blade, release the blade tension handle. (Item A on page 4). Remove the blade.

To install the blade, place the blade over the bottom wheel, then on the top wheel. Teeth must point down toward the table. Tighten the blade tension handle enough to hold the blade firmly in place, and then push the blade into the guide inserts. Turn the machine on to allow the blade to position itself and then finish tightening the blade. **IMPORTANT:** Blade must be tight to insure straight cut.

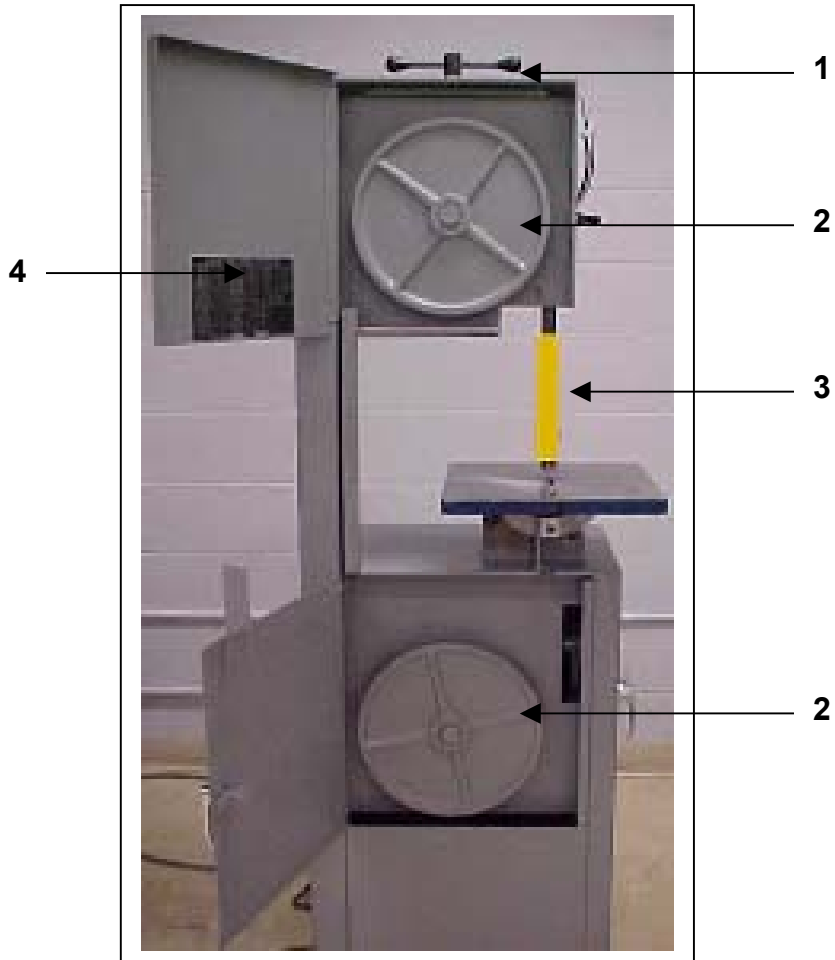
Please Note:

The most common causes for your 14-10 not cutting straight are:

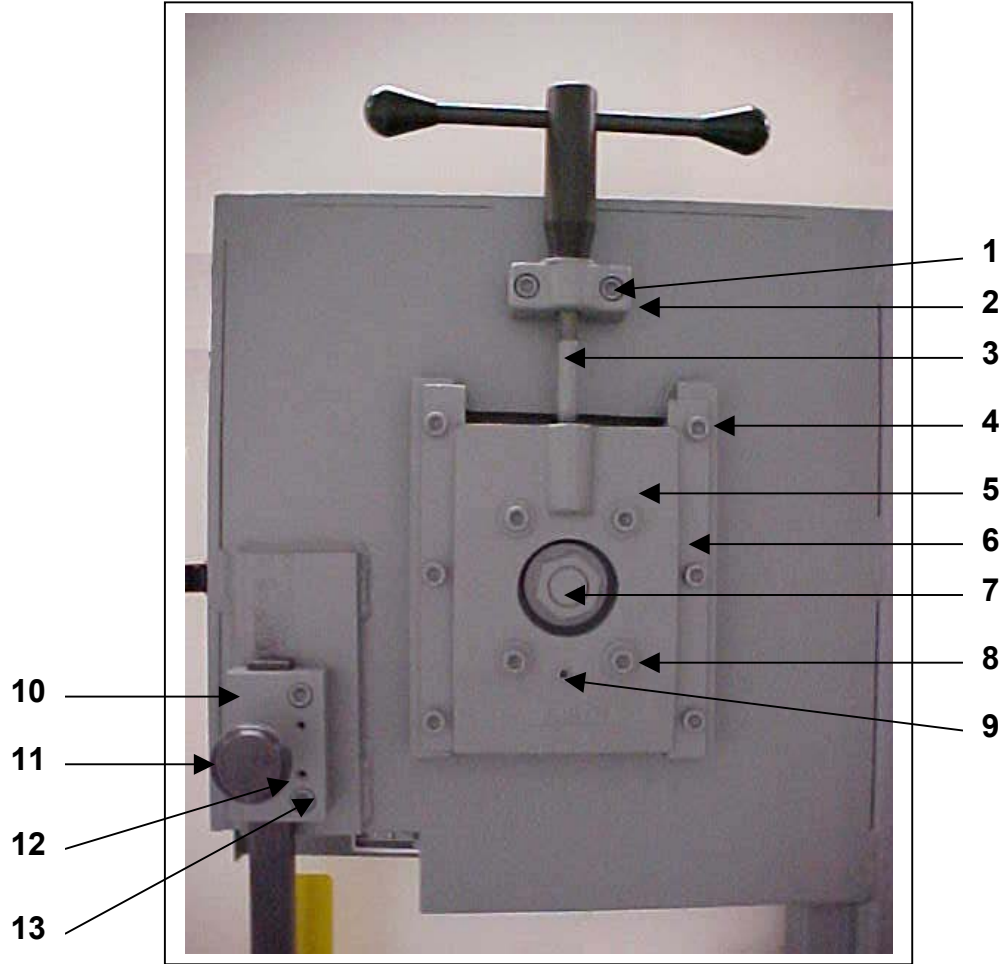
- 1) Blade tension is too low.
- 2) The blade is either dull or worn on one side.
- 3) The blade is upside down. The teeth must point down toward the table.



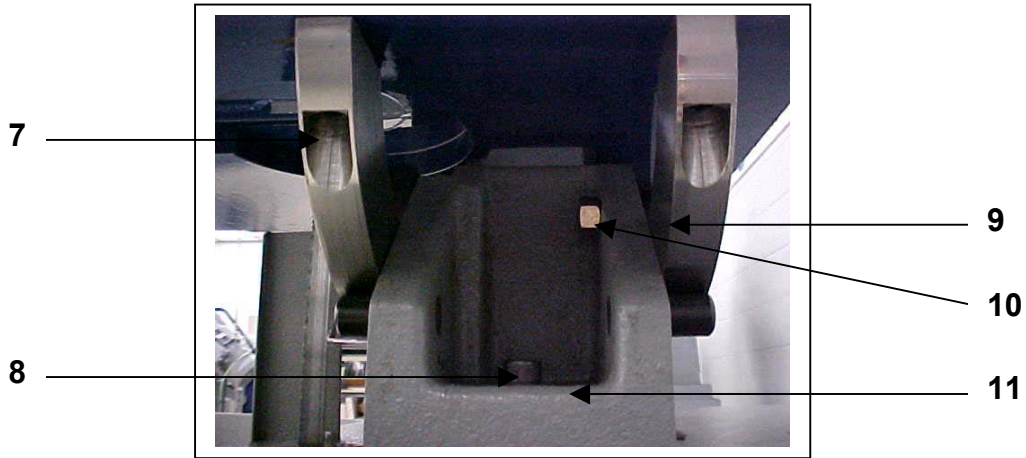
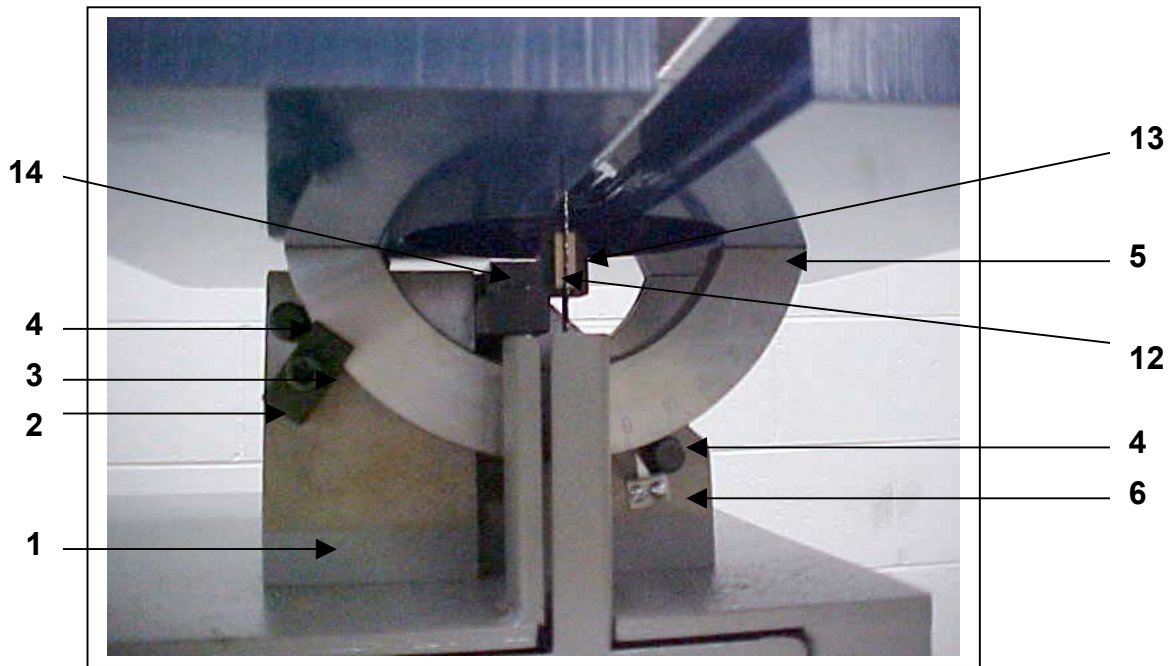
| Item | Part Number | Description | Quantity |
|------|-------------|-------------------------|----------|
| 1 | 716716 | Tension Handle Assembly | 1 |
| 2 | 86747 | Door Latch | 1 |
| 3 | 87088 | Table | 1 |
| 4a | 300568 | Door Handle | 2 |
| 4b | 300569 | Door Latch | 2 |
| 5 | 716745 | Frame Assembly | 1 |



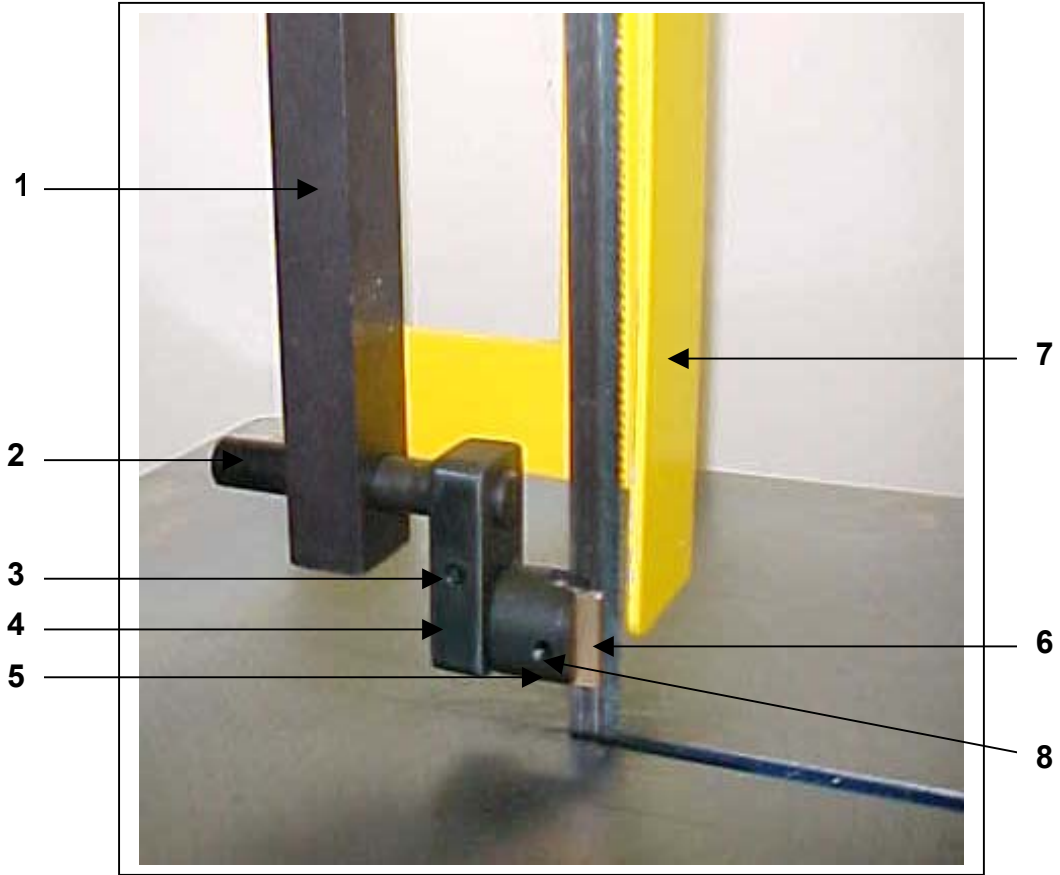
| Item | Part Number | Description | Quantity |
|----------|---------------|--------------------------------|----------|
| 1 | 716716 | Tension Handle Assembly | 1 |
| | 86828 | Tension Handle Body | 1 |
| | 87104 | Tension Handle | 2 |
| 2 | 716705 | Wheel Assembly | 2 |
| | 300459 | Band, Blade Wheel | 1 |
| | 300466 | Retaining Ring | 2 |
| | 300693 | Bearing, Wheel | 2 |
| | 86795 | Wheel Blade – Lower/Upper | 1 |
| | 86803 | Axle Wheel Lower/Upper | 1 |
| | 86804 | Stud – Wheel | 1 |
| 3 | 87012 | Blade Guard | 1 |
| 4 | 300585 | Speed Selector Label | 1 |



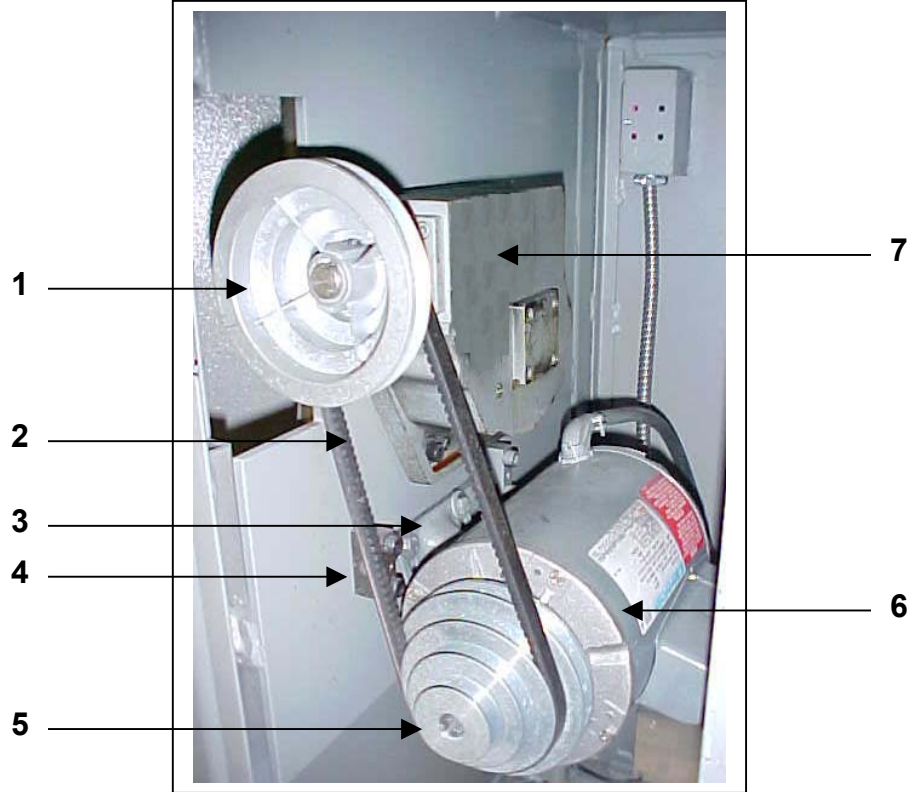
| Item | Part Number | Description | Quantity |
|------|-------------|---|----------|
| 1 | 43450 | Cap Screw | 2 |
| 2 | 86827 | Pillow Block | 1 |
| 3 | 86830 | Tension Screw | 1 |
| 4 | 43447 | Cap Screw | 6 |
| 5a | 86824 | Wheel Slide – External piece | 1 |
| 5b | 86825 | Wheel Slide Adjustment – Internal piece | 1 |
| 6 | 86826 | Rail Wheel Slide | 2 |
| 7a | 43922 | Nut | 1 |
| 7b | 43638 | Washer | 1 |
| 8a | 43452 | Soc Cap Screw 3/8-16 x 1-3/4 | 4 |
| 8b | 43632 | Washer 5/16" flat | 4 |
| 9 | 43591 | Set Screw 3/8-16 x 1 | 1 |
| 10 | 86810 | Guide Bar Holder | 1 |
| 11 | 300832 | Knob Assembly 1-1/2" | 1 |
| 12 | 70287 | Roll pin | 2 |
| 13 | 43451 | Cap Screw | 2 |



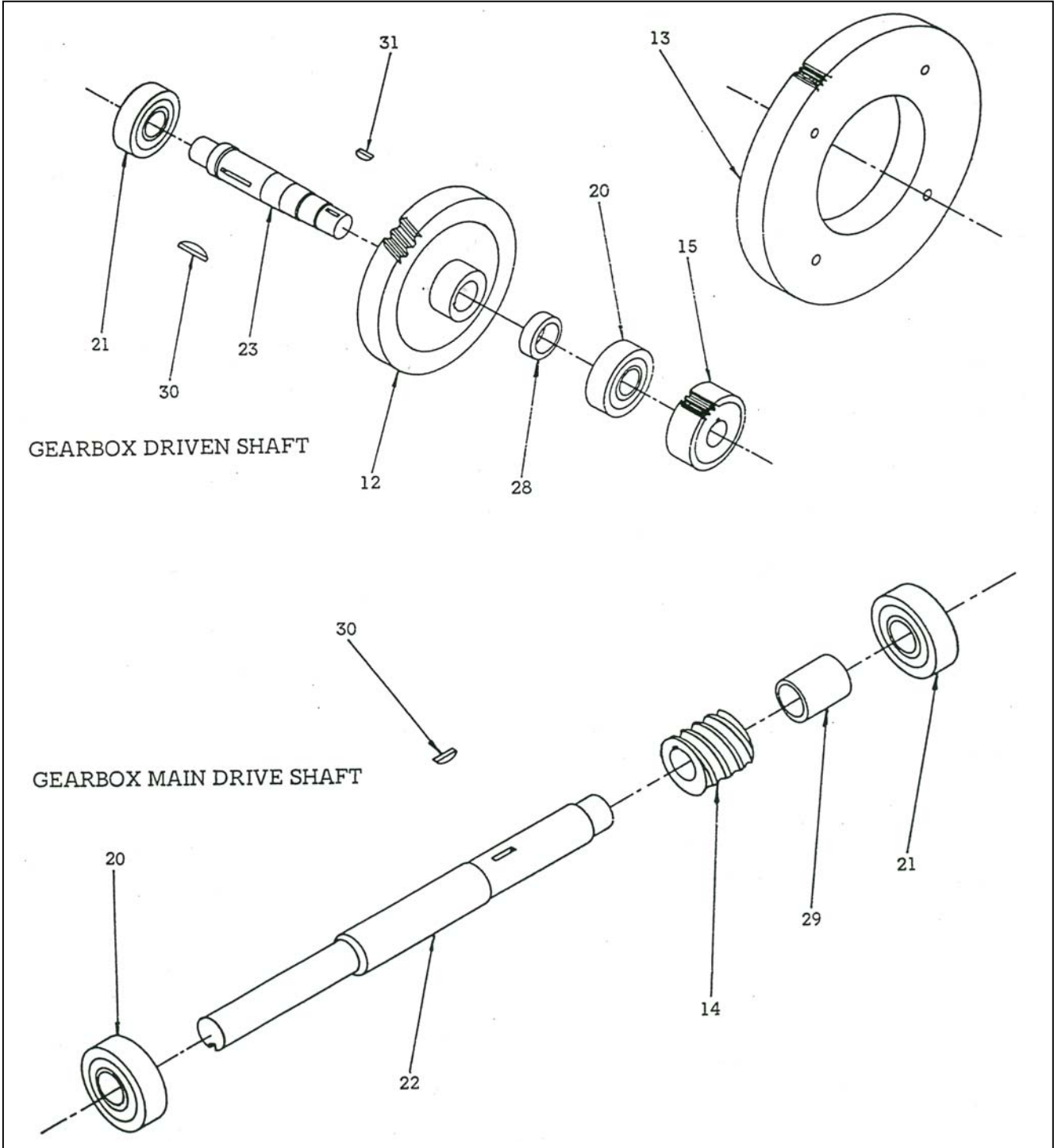
| Item | Part Number | Description | Quantity |
|------|---------------|---|----------|
| | 716749 | Saddle Assembly - | 1 |
| 1 | 87081 | Table Top Base | 1 |
| 2 | 87025 | Table Lock | 1 |
| 3 | 43939 | Nut, Hex Jam, 7/16-20 | 1 |
| 4 | 44033 | Pin, Dowel | 4 |
| 5 | 87078 | Rocker Rings | 2 |
| 6 | 87077 | Pointer, Rocker Ring | 1 |
| 7 | 43449 | Screw, Soc Set | 4 |
| 8 | 43451 | Screw, Soc Cap | 2 |
| 9 | 300564 | Cam Follower | 1 |
| 10 | 43939 | Nut, Hex Jam 7/16-20 | 1 |
| 11 | 43591 | Pin, Spiral or Roll | 2 |
| 12 | 86806 | Insert, Contour Guide Insert | 1 |
| 13 | 87034 | Lower Guide Holder 1 x 1-5/8" x 1-9/16" | 1 |
| 14 | 87033 | Guide Bracket 4" x 4" x 3/4" x 1" long | 1 |



| Item | Part Number | Description | Quantity |
|------|-------------|--|----------|
| 1 | 87029 | Guide Bar | 1 |
| 2 | 86912 | Upper guide stem | 1 |
| 3 | 43545 | Screw, Soc Cap 1-1/2-6 x 4 1/2 | 1 |
| 4 | 87028 | Upper Guide Swivel | 1 |
| 5 | 86808 | Holder Contour Insert | 1 |
| 6 | 86807 | Insert Contour Guide | 1 |
| 7 | 87012 | Blade Guard | 1 |
| 8 | 43545 | Screw, Soc Set #10-24 x 1/4, Cup point | 1 |



| Item | Part Number | Description | Quantity |
|------|-------------|-------------------------------|----------|
| 1 | 300473 | Pulley, Gearbox | 1 |
| | 77449 | Key for Pulley | 1 |
| 2 | 300522 | V-Belt | 1 |
| 3 | 86798 | Motor mounting axle | 1 |
| | 43314 | Screw, Hex cap 5/16-18 x 3/4 | 2 |
| | 43632 | Washer 5/16 inch flat | 2 |
| 4 | 86800 | Block, motor mounting | 2 |
| | 43450 | Screw, Soc Cap 3/8-16 x 1-1/4 | 4 |
| | 300597 | Screw, Soc Set 1/4 – 20 x 1/4 | 2 |
| 5 | 300542 | Pulley, Motor | 1 |
| | 77449 | Key for Pulley | 1 |
| 6 | 300485 | Motor, Single Phase | 1 |
| | 300486 | Motor, Three Phase | 1 |



| Item | Part Number | Description | Quantity |
|------|---------------|---------------------------|----------|
| | 716712 | Gearbox Assembly | 1 |
| | 300472 | Bearing, Seal | 2 |
| | 300490 | Gasket, Gearbox | 1 |
| | 300491 | Gasket, Gearbox | 4 |
| | 300589 | Dowel Pin 3/16 x 1/2 | 2 |
| | 43412 | Screw, Soc Cap | 16 |
| | 43414 | Screw, Soc Cap | 6 |
| | 43590 | Screw, Soc Set | 3 |
| | 86820 | Bearing Cover, Small/hole | 2 |
| | 86821 | Bearing Cover, Small | 2 |
| | 86822 | Gearbox Casting | 1 |
| | 86823 | Cover, Gearbox | 1 |
| 12 | 300666 | Gear, Worm 40T Bronze | 1 |
| 13 | 86784 | 80 Tooth Gear | 1 |
| 14 | 300456 | Worm, 4-Lead | 1 |
| 15 | 300646 | 24 Tooth Gear | 1 |
| 20 | 300454 | Bearing, Gearbox | 2 |
| 21 | 300448 | Bearing, Gearbox | 2 |
| 22 | 86785 | Shaft, Main Drive | 1 |
| 23 | 86781 | Axle, Gearbox-Short | 1 |
| 28 | 86783 | Spacer, Gearbox 1-1/4 | 1 |
| 29 | 86786 | Spacer, Gearbox | 1 |
| 30 | 300449 | Key, Woodruff #13 | 2 |
| 31 | 300451 | Key, Woodruff #5 | 1 |